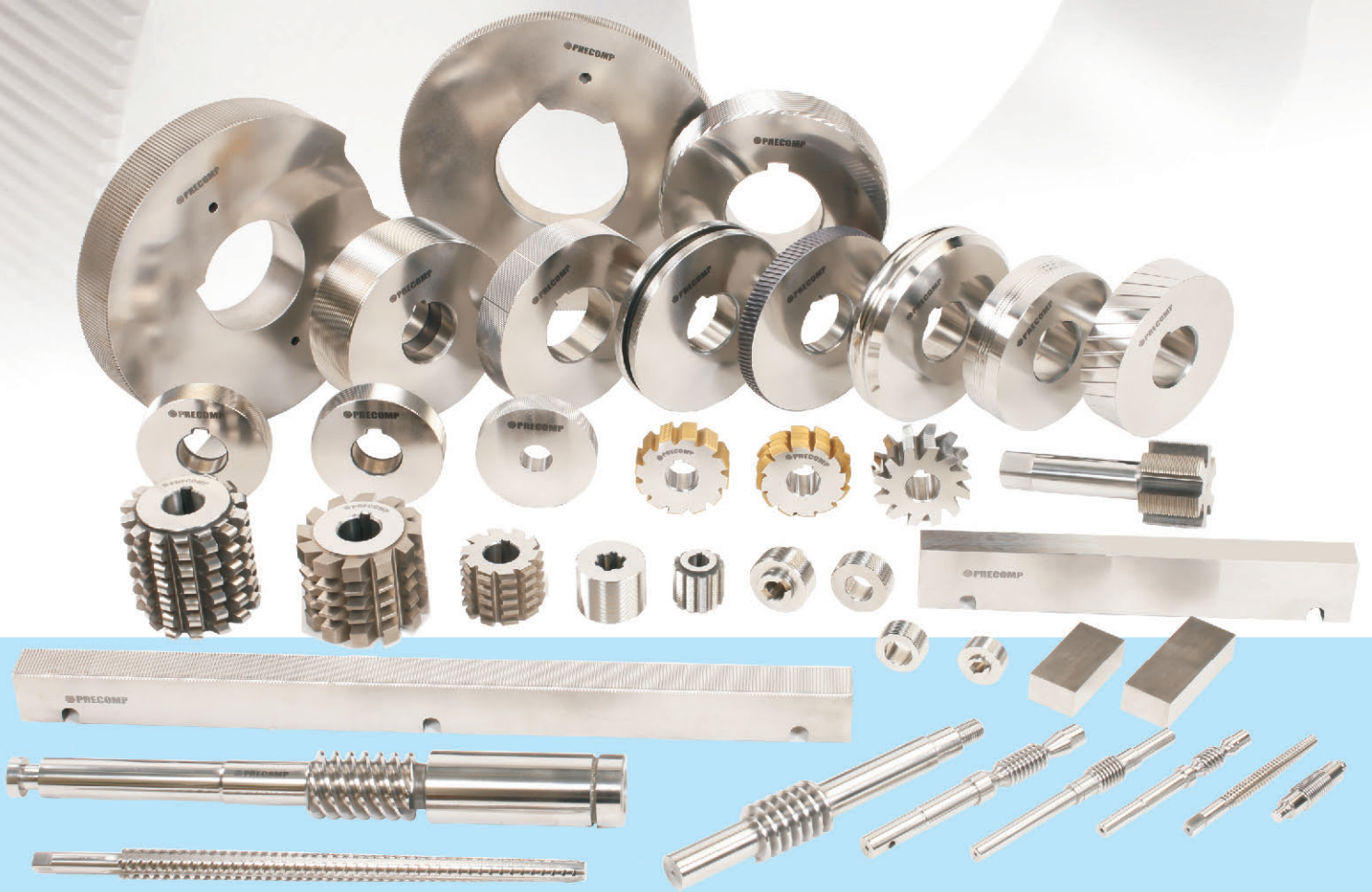




PRECOMP TOOLS PVT. LTD.

Advanced Production Machines
Accurate Quality monitoring Equipment
CAD based designing of Profiles
Use of Special Tool steels and Advance Heat Treatment
Solutions for Rolling Stainless steel, High Tensile & aerospace materials
Regrinding Service





- Max Ø 248mm.
- Die Head attachments using 2 or 3 dies for axial, radial & tangential rolling.
- Stainless steel rolling and high tensile rolling applications.
- Infeed, annular throughfeed and combination throughfeed rolling.
- Thread profiles as per ISO, BS, UN, DIN, JIS, ANSI as well as special profiles.
- Rollers with Radius Run-out (RRO)

Thread Rolling Dies:

- For Burnishing of Profiles as per customer's requirements.
- For Rolling of Annular and Helical Grooves.
- For Burnishing and Rolling of Worm Profiles.



Special Profile Rolling Dies :

Serration, Spline and Incremental Spline Rolling Dies :

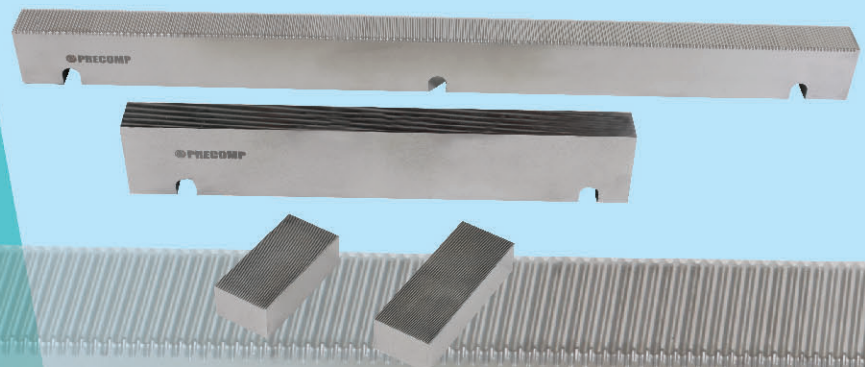


- Max Ø 300 mm.
- Infeed & axial force feed rolls.
- Profiles as per spline standards DIN, IS, JIS, ANSI as well as special profiles.
- Straight, helical and diamond knurling from 0.5mm pitch onwards.
- Straight, helical and involute Splines with 30°PA onwards, 0.2 to 2.0 MOD.



- For all types of standard rack rolling machines both vertical and horizontal.
- Thread racks of lengths 13" and widths upto 100mm.
- Spline racks of lengths 24", 36" and widths upto 150mm.
- For suitable mounting designs in 1, 2 and 3 piece.
- With spherical, tangential radius and standard chamfer.
- Standard spline profiles including helical splines and straight and helical oil groove profiles.
- For applications with blocked splines.

Spline Racks and Thread Racks :



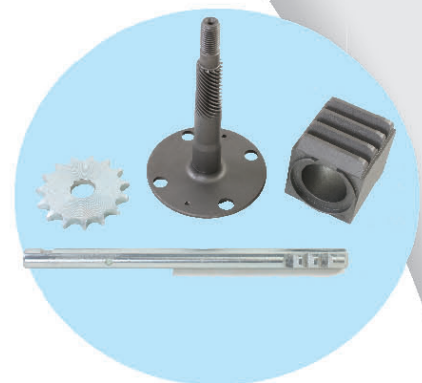
Ground and Whirled Components :

- Ground Worms upto $\varnothing 100\text{mm}$ and MOD 6.0 and lengths upto 600mm.
- Whirled Worms upto $\varnothing 50\text{mm}$ and MOD 4.0 and lengths upto 500mm.



Thread and Form Cutting Tools :

- Serration and Thread milling cutters with both bore & shank type with relief ground upto $\varnothing 125\text{ mm}$.
- Rack and Form milling cutters with turned relief upto $\varnothing 250\text{ mm}$.
- Serration and Gear Hobs with ground relief upto $\varnothing 125\text{ mm}$.
- Taps for Acme & Trapezoidal Profiles.
- Taps for standard profiles (ISO, DIN, JIS) $\varnothing 30\text{ mm}$ and above.
- Sprocket Hobs with turned and ground relief as per requirement according to ANSI B29.1, ASA B29.1, DIN8196, JIS B1802, BS228.

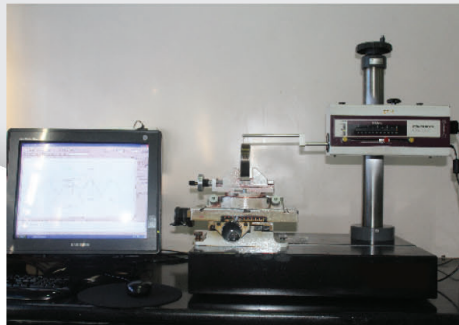


Inspection Equipment :

The products that are manufactured with high Quality standards and Accuracy are inspected on highly accurate Inspection Measuring Equipment.

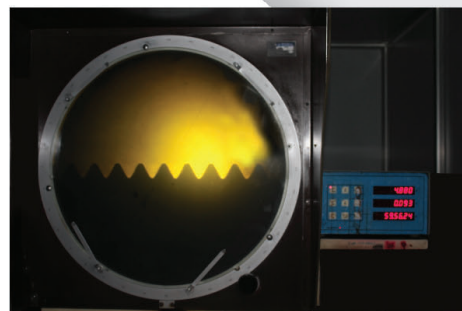
Contracer :

The accurately ground thread, serration, spline and special profiles are inspected on a Contracer. The profile reports could be provided to the customer on demand along with the product.



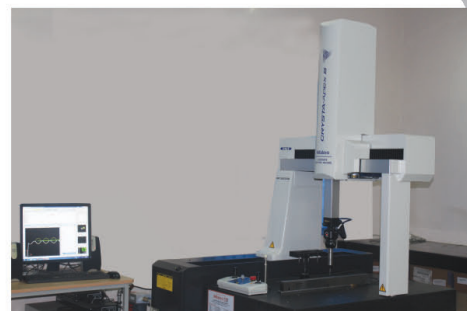
Profile Projector :

The inprocess inspection of ground thread, serration, spline and special profiles are carried out on all products on highly accurate Profile projector, assisted by a DRO unit.



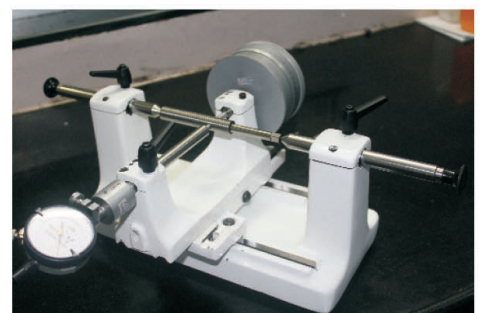
Coordinate Measuring Machine :

The pitch, lead & profile accuracies of Straight & Helical Profiles are checked on the CMM ensuring quality components are rolled by our products. In case of Spline Racks, tooth to tooth pitch errors as well as cumulative pitch errors are inspected. Reports of these values could be provided to the customer on demand along with the product.



Floating Carriage :

The profile masters which dress the wheel profile are accurately inspected on the Floating Carriage ensuring that the final profile quality on the product is met. Other products like Serration hobs, Taps, Thread milling Cutters are also checked on Floating Carriage.



Established in 1984 by a team of first generation entrepreneurs, Precomp today has come to establish itself and be recognised as a reputed and a leading thread form tool manufacturing company in India.

We are located on the outskirts of Pune, the leading automobile and engineering industrial centre of India and are well connected to all parts of India by road, rail and air.

With a compliment of both circular and incremental thread and spline rolls as well as spline and thread racks, Precomp today can meet the complete requirement of external thread and spline rolling applications.

Our customer profile includes industries in the automobile (two, three and four wheeler and commercial vehicles) tractor industry, auto component and ancillary sector, high tensile fastener manufacturing sector, textile machinery manufacturing sector, defence and aerospace equipment industry, process control and general engineering industry.

Our manufacturing is supported amongst a host of other machines by reputed machine tools such as Reishauer, Reinecker, Voumard, Klingelberg, Burgsmuller, Bahmuller and such machines, all known for their high accuracies, precision and repeatability.

The manufacturing is equally well supported by a world class quality control cell equipped with high end equipments and instruments that closely monitors all stages of the production activity.

We are equipped with special CAD software for designing of profiles.

Our company partners customers by way of conducting in-house thread and spline rolling trials for special rolls and profiles, thereby proving the rolls prior to shipment.

We also partner customers by conducting regular in-house training sessions at customer's end and working closely with the end users for overall machine and tool improvement programmes.

Precomp set up its own subsidiary in 2013 under the name Metform Vacutreat India Pvt. Ltd., where we have a state of the art vacuum heat treatment facility and allied services for material testing. This also supports having a clean environment. This gives Precomp the advantage of using very special steels with diverse heat treatment cycles for enhancing tool life and for rolling of hard to roll toughened materials for high tensile fasteners, stainless steel applications and aerospace materials.

Our company is certified for its operating systems to meet the ISO 9001 - 2008 norms.

STATEMENT OF STRATEGIC INTENT

The corporate goal, Precomp has set for itself :

- To be one of the most competitive companies in the field of cutting tools by continuously upgrading and adding values to its products.
- To grow with new opportunities and be the leader in an ever changing global market. Commitment to continuous quality improvement and to exceed customer's expectation shall be the driving force.
- To build on existing strengths and develop new competencies thereby gaining competitive edge in the market.
- To be widely known, accepted and respected for its highly ethical practices with high accent in human relations.
- To be a responsible corporate citizen.



PRECOMP TOOLS PVT. LTD.

Plot No. 108-D, Ranje, Taluka Bhor,
Dist. Pune - 412 205.

Tel.: +91-99229 37301, 99229 37302, 95525 62552

E-mail : marketing@precomptools.com

Website : www.precomptools.com

